

# National Safety Survey

Brought to you by  
EHS Today

July, 2009

## **EVALUATION SURVEY METHODOLOGY**

### ***SUMMARY OF MAILING . . .***

The survey was conducted on June 24, 2009 via an e-mail deployment. By July 8, 2009 (cutoff date), 932 questionnaires had been received for tabulation. The names used for this survey were selected on a random nth -name basis from the entire 20,000+ circulation list of ***EHS Today*** that have opted in for research analysis compilation.

### ***REPORT FORMAT . . .***

Study findings are presented in Questionnaire Sequence Analysis (i.e., question by question analysis following the flow of the questionnaire.) Percentages in this report are based on total answering. Some percentages will not add up to 100% due to rounding of the numbers.

A Jump Start Booster Cable was offered as an incentive to increase the rate of response.

### ***RESEARCH OBJECTIVES . . .***

The overall objective of this report is to provide ***EHS Today*** readers with a comprehensive view of the issues, concerns and opinions of their peers working in the occupational safety and health fields.

This study was conducted by the ***EHS Today's*** Research Department. Survey results are not to be promoted without ***EHS Today's*** permission.

If you would like additional information, please contact ***EHS Today's*** Research Department, 1300 E. 9th Street, Cleveland, Ohio 44114.

# Executive Summary

## 1. Which of the following areas do you have responsibility for? (Check all that apply)

|                          |     |     |
|--------------------------|-----|-----|
| Safety                   | 850 | 91% |
| Industrial Hygiene       | 541 | 58% |
| Occupational Health      | 582 | 63% |
| Environmental Compliance | 499 | 54% |
| Emergency Preparedness   | 645 | 69% |
| Ergonomics               | 561 | 60% |
| Fire Protection          | 510 | 55% |
| Workers' Compensation    | 338 | 36% |

## 2. How long have you worked in the environmental, health and safety (EHS) field or had EHS responsibilities?

|                    |            |     |
|--------------------|------------|-----|
| Less than 5 years  | 131        | 14% |
| 5-10 years         | 209        | 23% |
| 11-15 years        | 153        | 17% |
| 16-20 years        | 138        | 15% |
| More than 20 years | 296        | 32% |
| <b>Total</b>       | <b>927</b> |     |

## 3. What is your current salary?

|                      |            |     |
|----------------------|------------|-----|
| Less than \$35,000   | 61         | 7%  |
| \$35,000 - \$44,000  | 75         | 8%  |
| \$45,000 - \$54,000  | 119        | 13% |
| \$55,000 - \$64,000  | 140        | 15% |
| \$65,000 - \$74,000  | 133        | 15% |
| \$75,000 - \$84,000  | 112        | 12% |
| \$85,000 - \$94,000  | 86         | 10% |
| \$95,000 - \$104,000 | 84         | 9%  |
| More than \$105,000  | 95         | 10% |
| <b>Total</b>         | <b>905</b> |     |

# Executive Summary Con't.

## 4. What is your educational background? (Choose highest attained)

|                         |            |           |
|-------------------------|------------|-----------|
| Attended High School    | 3          | .3%       |
| High School Graduate    | 81         | 9%        |
| Attended College        | 259        | 28%       |
| Baccalaureate Degree    | 369        | 40%       |
| Masters Degree          | 200        | 22%       |
| <u>Doctorate Degree</u> | <u>17</u>  | <u>2%</u> |
| <b>Total</b>            | <b>929</b> |           |

## 5. Check any of the following certifications that you currently hold:

|                                       |     |      |
|---------------------------------------|-----|------|
| Certified Safety Professional         | 168 | 19%  |
| Certified Industrial Hygienist        | 52  | 5%   |
| Certified Hazardous Materials Manager | 77  | 8%   |
| Certified Occupational Health Nurse   | 12  | 1.3% |
| Qualified Environmental Professional  | 58  | 6%   |

## 6. Describe your work environment:

|                          |            |           |
|--------------------------|------------|-----------|
| Corporate staff          | 211        | 23%       |
| Division staff           | 67         | 7%        |
| Plant/facility/worksites | 408        | 44%       |
| Educational institution  | 30         | 3%        |
| Government               | 120        | 13%       |
| Consultant               | 72         | 8%        |
| <u>Healthcare</u>        | <u>23</u>  | <u>2%</u> |
| <b>Total</b>             | <b>931</b> |           |

## 7. Are EHS responsibilities a part-time or full-time function of your job?

|                  |            |             |
|------------------|------------|-------------|
| Part-time        | 329        | 36%         |
| <u>Full-time</u> | <u>590</u> | <u>64%</u>  |
| <b>Total</b>     | <b>919</b> | <b>100%</b> |

# Executive Summary Con't.

## 8. Do you consider yourself adequately educated and trained for your EHS responsibilities?

|              |            |             |
|--------------|------------|-------------|
| Yes          | 692        | 75%         |
| No           | 233        | 25%         |
| <b>Total</b> | <b>925</b> | <b>100%</b> |

## 9. Which of the following job duties do you have? (Check all that apply)

|                                      |     |     |
|--------------------------------------|-----|-----|
| EHS policy/program development       | 643 | 70% |
| OSHA compliance auditing             | 665 | 72% |
| Safety & health training             | 787 | 85% |
| PPE selection/purchasing             | 625 | 68% |
| Incident/illness recordkeeping       | 556 | 60% |
| Emergency response/first aid         | 577 | 62% |
| EHS staff management                 | 352 | 38% |
| Industrial hygiene sampling/analysis | 347 | 38% |
| Environmental compliance             | 482 | 52% |
| Workers' compensation management     | 323 | 35% |
| Wellness                             | 261 | 28% |

## 10. How would you describe the occupational safety and health program in your facility/organization?

|                |            |             |
|----------------|------------|-------------|
| World-class    | 55         | 6%          |
| Very good      | 381        | 41%         |
| Good           | 270        | 29%         |
| Average        | 139        | 15%         |
| Fair           | 55         | 60%         |
| Poor           | 10         | 1%          |
| Not applicable | 22         | 2%          |
| <b>Total</b>   | <b>932</b> | <b>100%</b> |

# Executive Summary Con't.

## 11. Does top management in your organization provide active and visible support for occupational safety and health?

|                       |            |             |
|-----------------------|------------|-------------|
| Yes                   | 759        | 82%         |
| No                    | 127        | 14%         |
| <u>Not applicable</u> | <u>43</u>  | <u>5%</u>   |
| <b>Total</b>          | <b>929</b> | <b>100%</b> |

## 12. Which of the following types of injuries/illnesses are you actively targeting in your organization/facility? (Check all that apply)

|                           |     |     |
|---------------------------|-----|-----|
| Arm/hand injuries         | 556 | 60% |
| Back injuries             | 584 | 62% |
| Chemical irritation/burns | 219 | 23% |
| Eye injuries              | 330 | 36% |
| Falls                     | 432 | 46% |
| Foot injuries             | 196 | 21% |
| Head injuries             | 175 | 19% |
| Hearing loss              | 300 | 32% |
| Heat stress               | 284 | 30% |
| Sprains & strains         | 581 | 62% |

## 13. Which of the following programs are currently conducted in your facility/organization? (Check all that apply)

|                           |     |     |
|---------------------------|-----|-----|
| Eye Safety                | 746 | 82% |
| Hearing conservation      | 661 | 72% |
| Respiratory protection    | 634 | 69% |
| Fall prevention           | 659 | 72% |
| Health promotion/wellness | 540 | 59% |
| Safety incentives         | 382 | 42% |
| AEDs                      | 461 | 50% |
| Ergonomics                | 545 | 60% |
| Confined space safety     | 551 | 60% |
| Electrical safety         | 673 | 74% |
| Driver safety             | 463 | 51% |
| Forklift training         | 679 | 74% |
| Air monitoring            | 512 | 56% |
| Hand safety               | 604 | 66% |

## Executive Summary Con't.

### 14. Compared to the previous year, did budget for occupational safety and health in your facility/organization in 2009:

|                        |            |             |
|------------------------|------------|-------------|
| Increase More than 10% | 37         | 4%          |
| Increase 1-10%         | 103        | 11%         |
| Stay the same          | 441        | 47%         |
| Decrease 1-10%         | 120        | 13%         |
| Decrease More than 10% | 89         | 10%         |
| <u>Do not know</u>     | <u>141</u> | <u>15%</u>  |
| <b>Total</b>           | <b>931</b> | <b>100%</b> |

### 15. Is safety on a par with production in your organization?

|                       |            |             |
|-----------------------|------------|-------------|
| Yes                   | 612        | 66%         |
| No                    | 191        | 21%         |
| <u>Not applicable</u> | <u>122</u> | <u>13%</u>  |
| <b>Total</b>          | <b>925</b> | <b>100%</b> |

### 16. Overall, how would you rate first-line supervision's attention to safety and health in your organization?

|                       |            |             |
|-----------------------|------------|-------------|
| Excellent             | 121        | 13%         |
| Good                  | 373        | 40%         |
| Average               | 270        | 29%         |
| Fair                  | 104        | 11%         |
| Poor                  | 39         | 4%          |
| <u>Not Applicable</u> | <u>24</u>  | <u>3%</u>   |
| <b>Total</b>          | <b>931</b> | <b>100%</b> |

## Executive Summary Con't.

**17. How would you rate the importance of employee safety and health in the everyday operations of your business? Rate from 1 (very high) to 5 (very low).**

|              |            |             |
|--------------|------------|-------------|
| Very high    | 338        | 37%         |
| High         | 314        | 34%         |
| Adequate     | 202        | 22%         |
| Low          | 64         | 7%          |
| Very low     | 4          | 0%          |
| <b>Total</b> | <b>922</b> | <b>100%</b> |

**18. How would you rate the performance so far of the Obama administration's approach to occupational safety and health?**

|              |            |             |
|--------------|------------|-------------|
| Excellent    | 25         | 3%          |
| Good         | 149        | 16%         |
| Average      | 244        | 26%         |
| Fair         | 125        | 13%         |
| Poor         | 134        | 14%         |
| Do not know  | 253        | 27%         |
| <b>Total</b> | <b>930</b> | <b>100%</b> |

**19. Which of the following occupational safety and health agencies do you consider the most effective in meeting its statutory responsibility?**

|   |            |             |
|---|------------|-------------|
| Occupational Safety and Health Administration         | 349        | 40%         |
| Mine Safety and Health Administration                 | 55         | 6%          |
| National Institute for Occupational Safety and Health | 192        | 22%         |
| U.S. Chemical Safety and Hazard Investigation Board   | 100        | 11%         |
| Environmental Protection Agency                       | 174        | 20%         |
| <b>Total</b>  | <b>870</b> | <b>100%</b> |

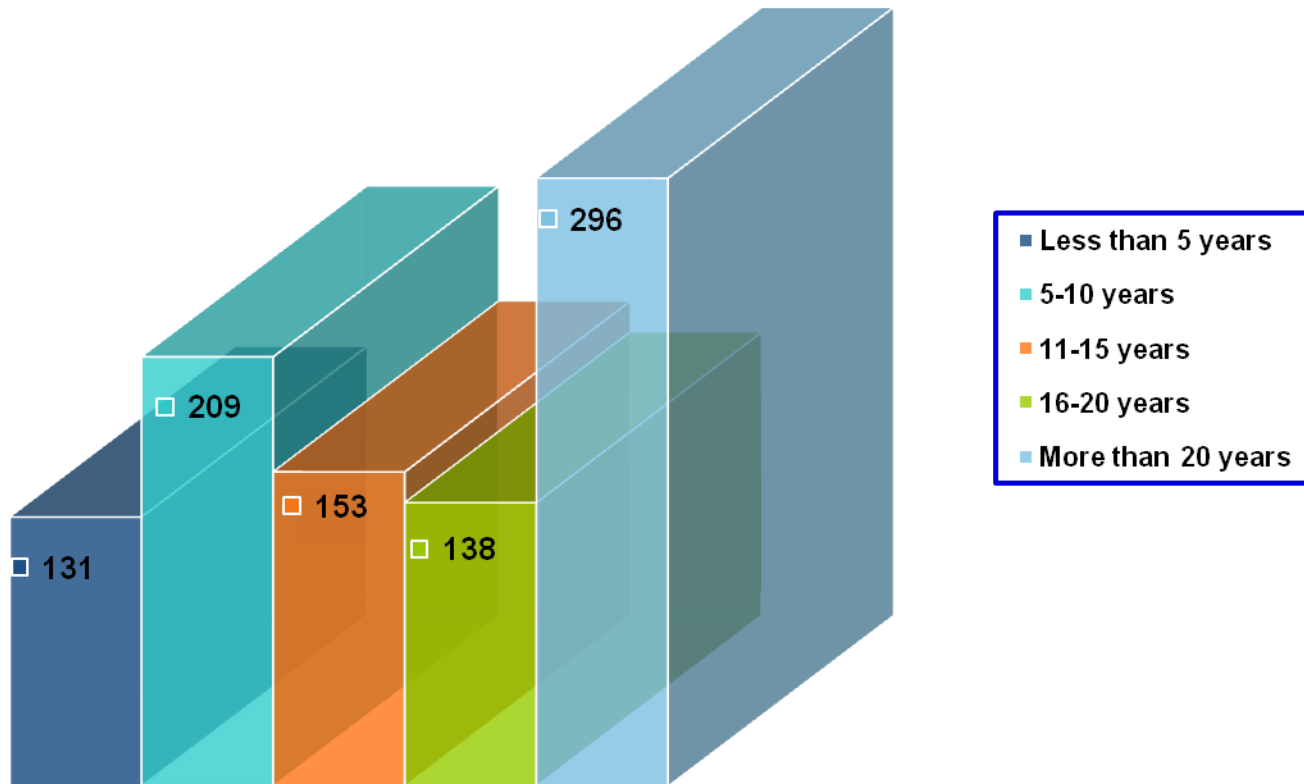
# Which of the following areas do you have responsibility for? (Check all that apply)

|                          |     |     |
|--------------------------|-----|-----|
| Safety                   | 850 | 91% |
| Industrial Hygiene       | 541 | 58% |
| Occupational Health      | 582 | 63% |
| Environmental Compliance | 499 | 54% |
| Emergency Preparedness   | 645 | 69% |
| Ergonomics               | 561 | 60% |
| Fire Protection          | 510 | 55% |
| Workers' Compensation    | 338 | 36% |

\* Base: 932 100%\*\*\*

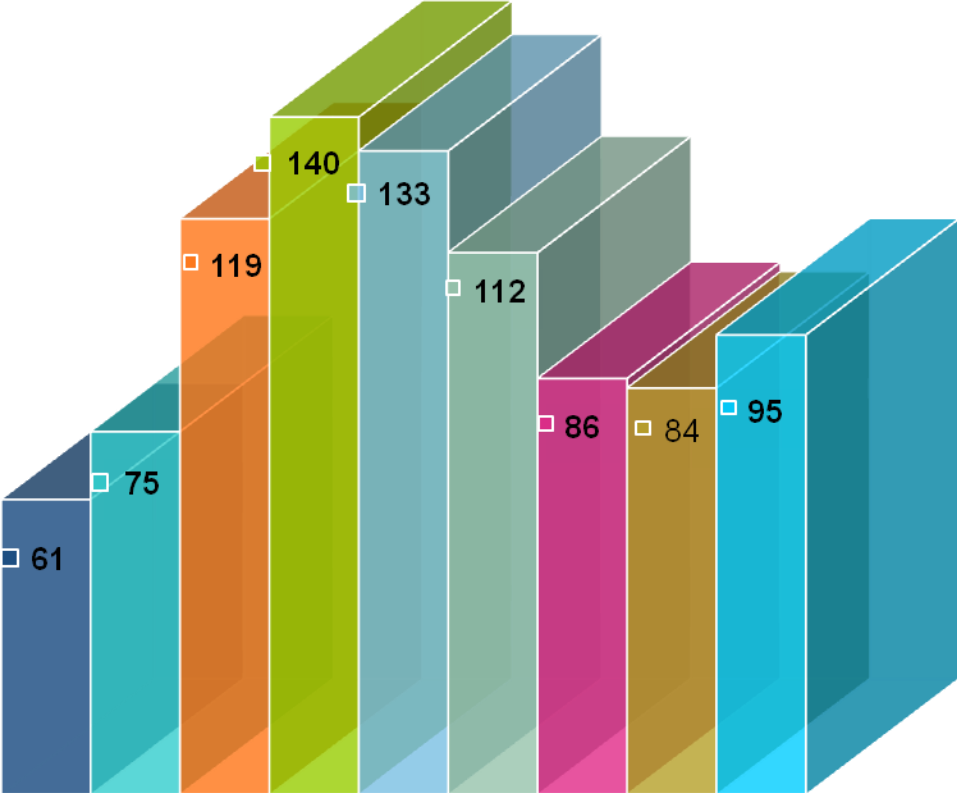
\*\*\* Total exceeds 100% due to multiple responses.

# How long have you worked in the environmental, health and safety (EHS) field or had EHS responsibilities?



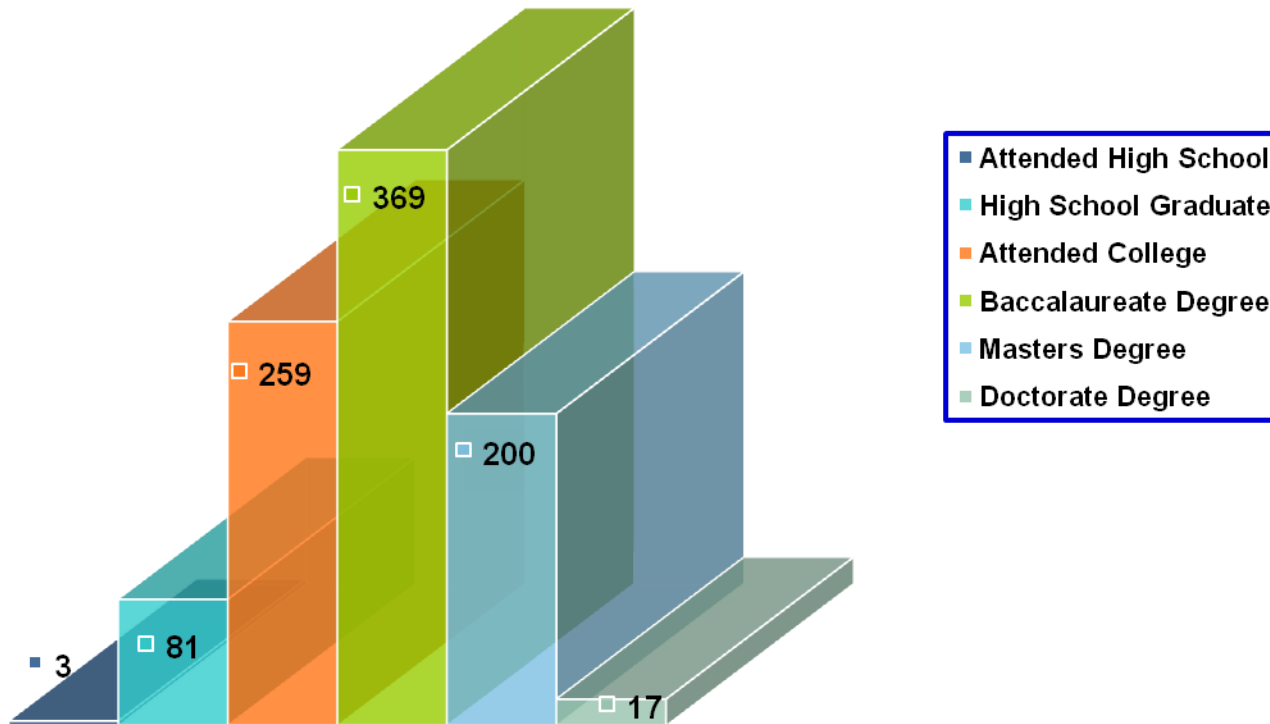
|                    |            |             |
|--------------------|------------|-------------|
| Less than 5 years  | 131        | 14%         |
| 5-10 years         | 209        | 23%         |
| 11-15 years        | 153        | 17%         |
| 16-20 years        | 138        | 15%         |
| More than 20 years | 296        | 32%         |
| <b>Total</b>       | <b>927</b> | <b>100%</b> |

# What is your current salary?



|                      |            |             |
|----------------------|------------|-------------|
| Less than \$35,000   | 61         | 7%          |
| \$35,000 - \$44,000  | 75         | 8%          |
| \$45,000 - \$54,000  | 119        | 13%         |
| \$55,000 - \$64,000  | 140        | 15%         |
| \$65,000 - \$74,000  | 133        | 15%         |
| \$75,000 - \$84,000  | 112        | 12%         |
| \$85,000 - \$94,000  | 86         | 10%         |
| \$95,000 - \$104,000 | 84         | 9%          |
| More than \$105,000  | 95         | 10%         |
| <b>Total</b>         | <b>905</b> | <b>100%</b> |

# What is your educational background? (Choose highest attained)



|                      |            |             |
|----------------------|------------|-------------|
| Attended High School | 3          | .3%         |
| High School Graduate | 81         | 9%          |
| Attended College     | 259        | 28%         |
| Baccalaureate Degree | 369        | 40%         |
| Masters Degree       | 200        | 22%         |
| Doctorate Degree     | 17         | 2%          |
| <b>Total</b>         | <b>929</b> | <b>100%</b> |

Check any of the following certifications that you currently hold:

|                                       |     |      |
|---------------------------------------|-----|------|
| Certified Safety Professional         | 168 | 19%  |
| Certified Industrial Hygienist        | 52  | 5%   |
| Certified Hazardous Materials Manager | 77  | 8%   |
| Certified Occupational Health Nurse   | 12  | 1.3% |
| Qualified Environmental Professional  | 58  | 6%   |

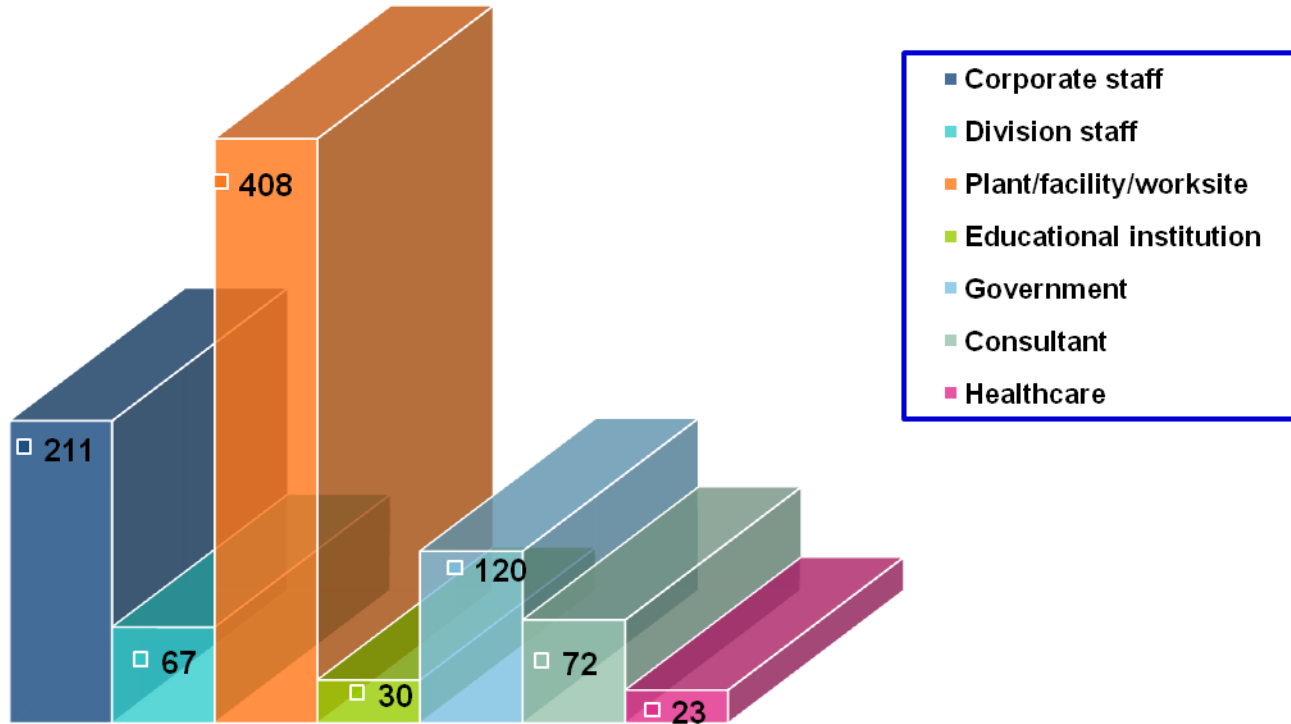
\* Base:

929

100%\*\*\*

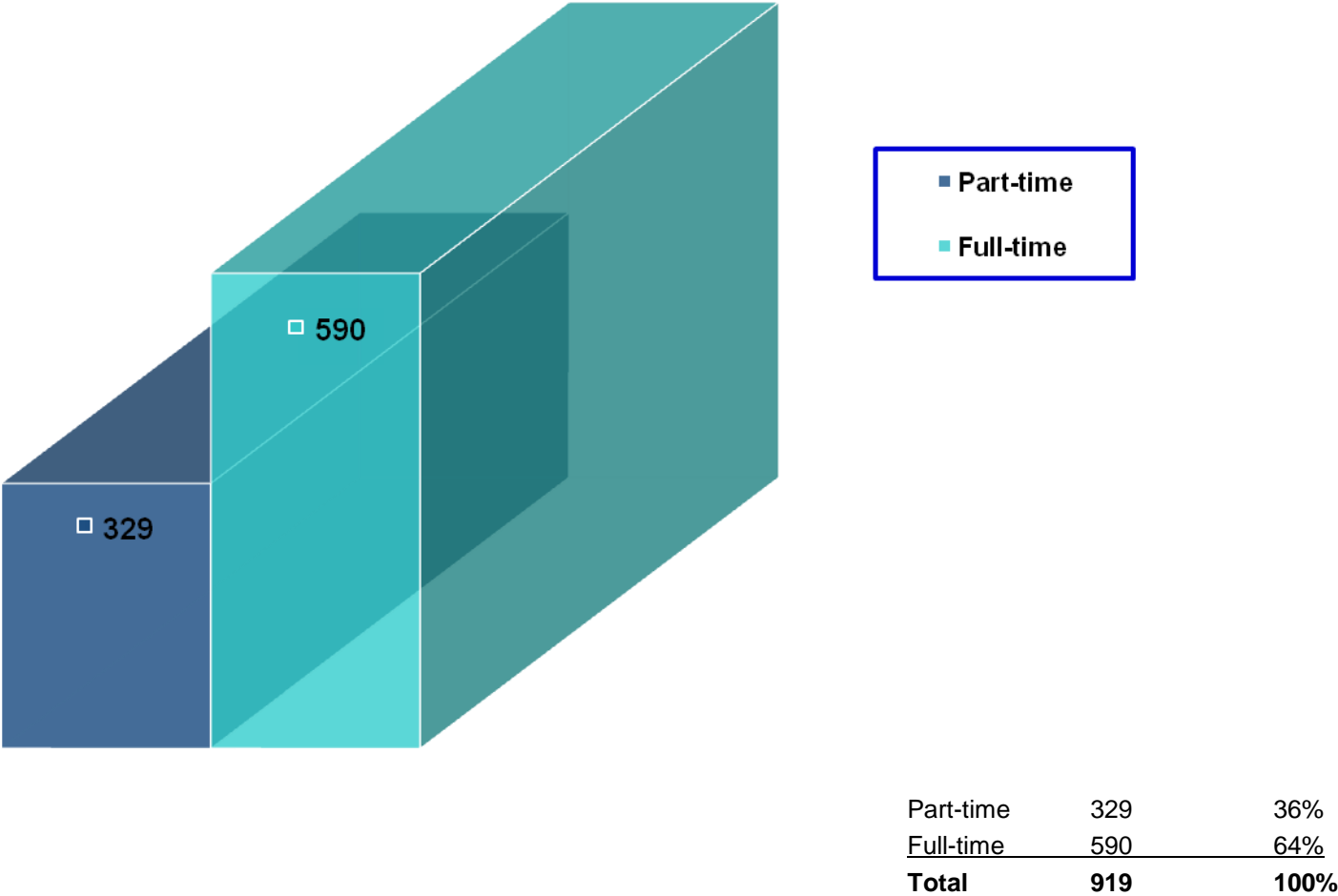
\*\*\* Total exceeds 100% due to multiple responses.

# Describe your work environment:

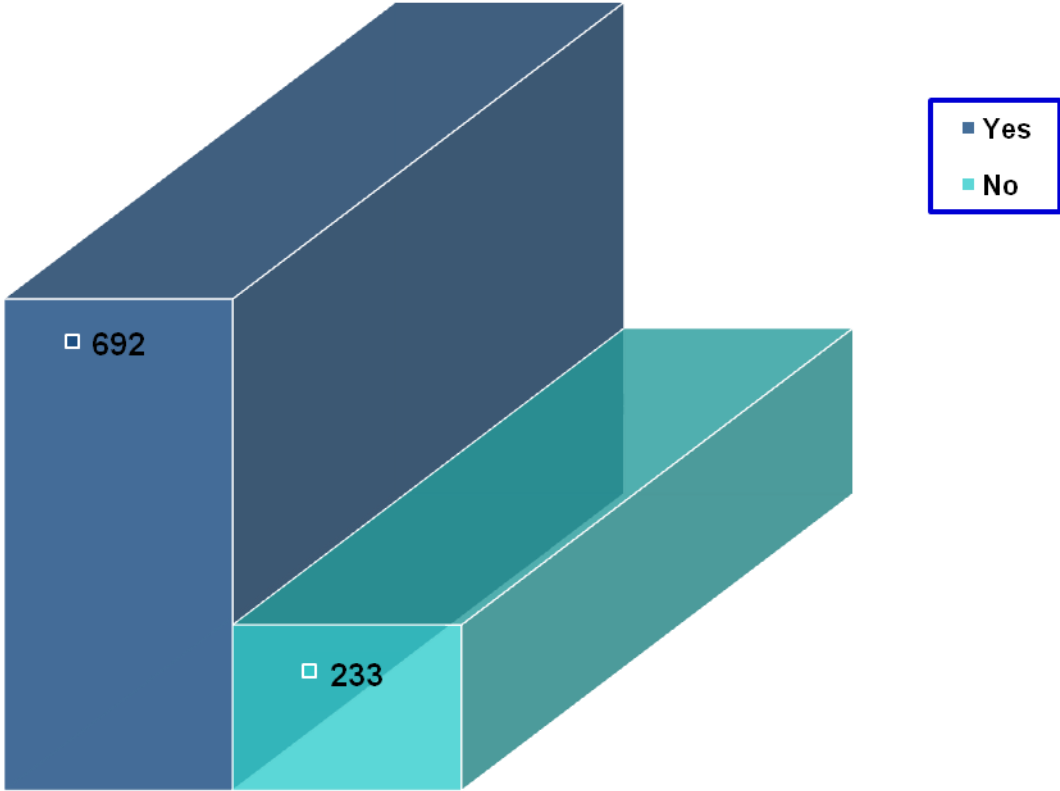


|                         |            |             |
|-------------------------|------------|-------------|
| Corporate staff         | 211        | 23%         |
| Division staff          | 67         | 7%          |
| Plant/facility/worksite | 408        | 44%         |
| Educational institution | 30         | 3%          |
| Government              | 120        | 13%         |
| Consultant              | 72         | 8%          |
| Healthcare              | 23         | 2%          |
| <b>Total</b>            | <b>931</b> | <b>100%</b> |

# Are EHS responsibilities a part-time or full-time function of your job?



# Do you consider yourself adequately educated and trained for your EHS responsibilities?



|              |            |             |
|--------------|------------|-------------|
| Yes          | 692        | 75%         |
| No           | 233        | 25%         |
| <b>Total</b> | <b>925</b> | <b>100%</b> |

# Which of the following job duties do you have? (Check all that apply)

|                                      |     |     |
|--------------------------------------|-----|-----|
| EHS policy/program development       | 643 | 70% |
| OSHA compliance auditing             | 665 | 72% |
| Safety & health training             | 787 | 85% |
| PPE selection/purchasing             | 625 | 68% |
| Incident/illness recordkeeping       | 556 | 60% |
| Emergency response/first aid         | 577 | 62% |
| EHS staff management                 | 352 | 38% |
| Industrial hygiene sampling/analysis | 347 | 38% |
| Environmental compliance             | 482 | 52% |
| Workers' compensation management     | 323 | 35% |
| Wellness                             | 261 | 28% |

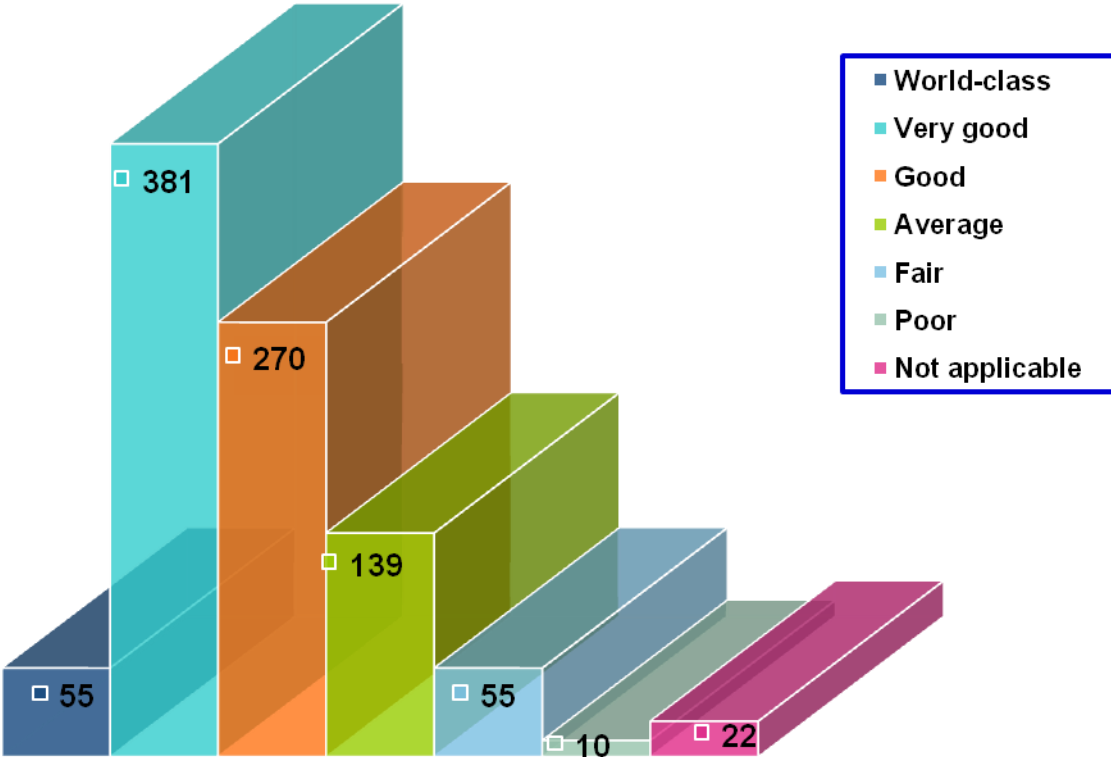
\* Base:

920

100%\*\*\*

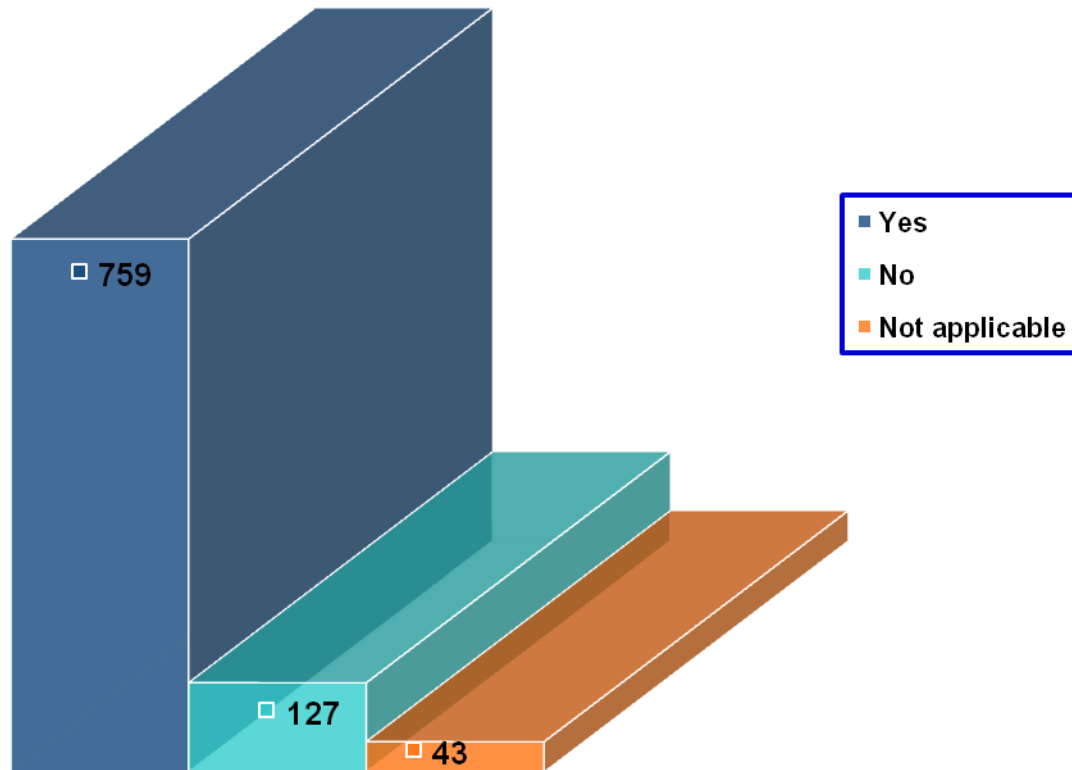
\*\*\* Total exceeds 100% due to multiple responses.

# How would you describe the occupational safety and health program in your facility/organization?



|                |            |             |
|----------------|------------|-------------|
| World-class    | 55         | 6%          |
| Very good      | 381        | 41%         |
| Good           | 270        | 29%         |
| Average        | 139        | 15%         |
| Fair           | 55         | 60%         |
| Poor           | 10         | 1%          |
| Not applicable | 22         | 2%          |
| <b>Total</b>   | <b>932</b> | <b>100%</b> |

# Does top management in your organization provide active and visible support for occupational safety and health?



|                |            |             |
|----------------|------------|-------------|
| Yes            | 759        | 82%         |
| No             | 127        | 14%         |
| Not applicable | 43         | 5%          |
| <b>Total</b>   | <b>929</b> | <b>100%</b> |

Which of the following types of injuries/illnesses are you actively targeting in your organization/facility? (Check all that apply)

|                           |     |     |
|---------------------------|-----|-----|
| Arm/hand injuries         | 556 | 60% |
| Back injuries             | 584 | 62% |
| Chemical irritation/burns | 219 | 23% |
| Eye injuries              | 330 | 36% |
| Falls                     | 432 | 46% |
| Foot injuries             | 196 | 21% |
| Head injuries             | 175 | 19% |
| Hearing loss              | 300 | 32% |
| Heat stress               | 284 | 30% |
| Sprains & strains         | 581 | 62% |

\* Base: 928 100%\*\*\*

\*\*\* Total exceeds 100% due to multiple responses.

# Which of the following programs are currently conducted in your facility/organization? (Check all that apply)

|                           |     |     |
|---------------------------|-----|-----|
| Eye Safety                | 746 | 82% |
| Hearing conservation      | 661 | 72% |
| Respiratory protection    | 634 | 69% |
| Fall prevention           | 659 | 72% |
| Health promotion/wellness | 540 | 59% |
| Safety incentives         | 382 | 42% |
| AEDs                      | 461 | 50% |
| Ergonomics                | 545 | 60% |
| Confined space safety     | 551 | 60% |
| Electrical safety         | 673 | 74% |
| Driver safety             | 463 | 51% |
| Forklift training         | 679 | 74% |
| Air monitoring            | 512 | 56% |
| Hand safety               | 604 | 66% |

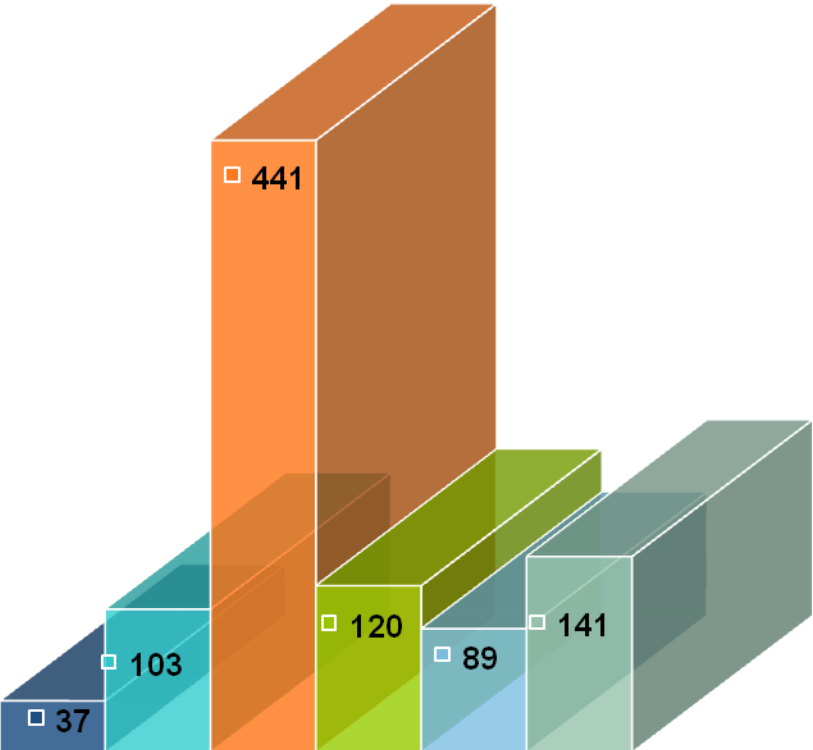
\* Base:

915

100%\*\*\*

\*\*\* Total exceeds 100% due to multiple responses.

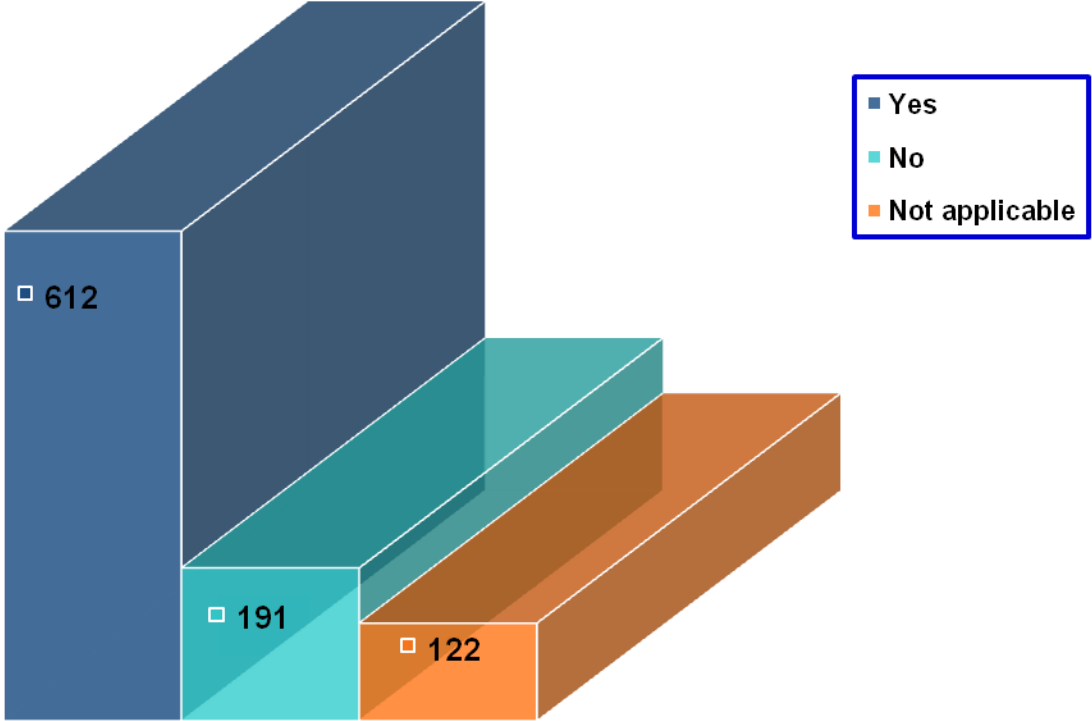
# Compared to the previous year, did budget for occupational safety and health in your facility/organization in 2009:



- Increase more than 10%
- Increase 1-10%
- Stay the same
- Decrease 1-10%
- Decrease more than 10%
- Do not know

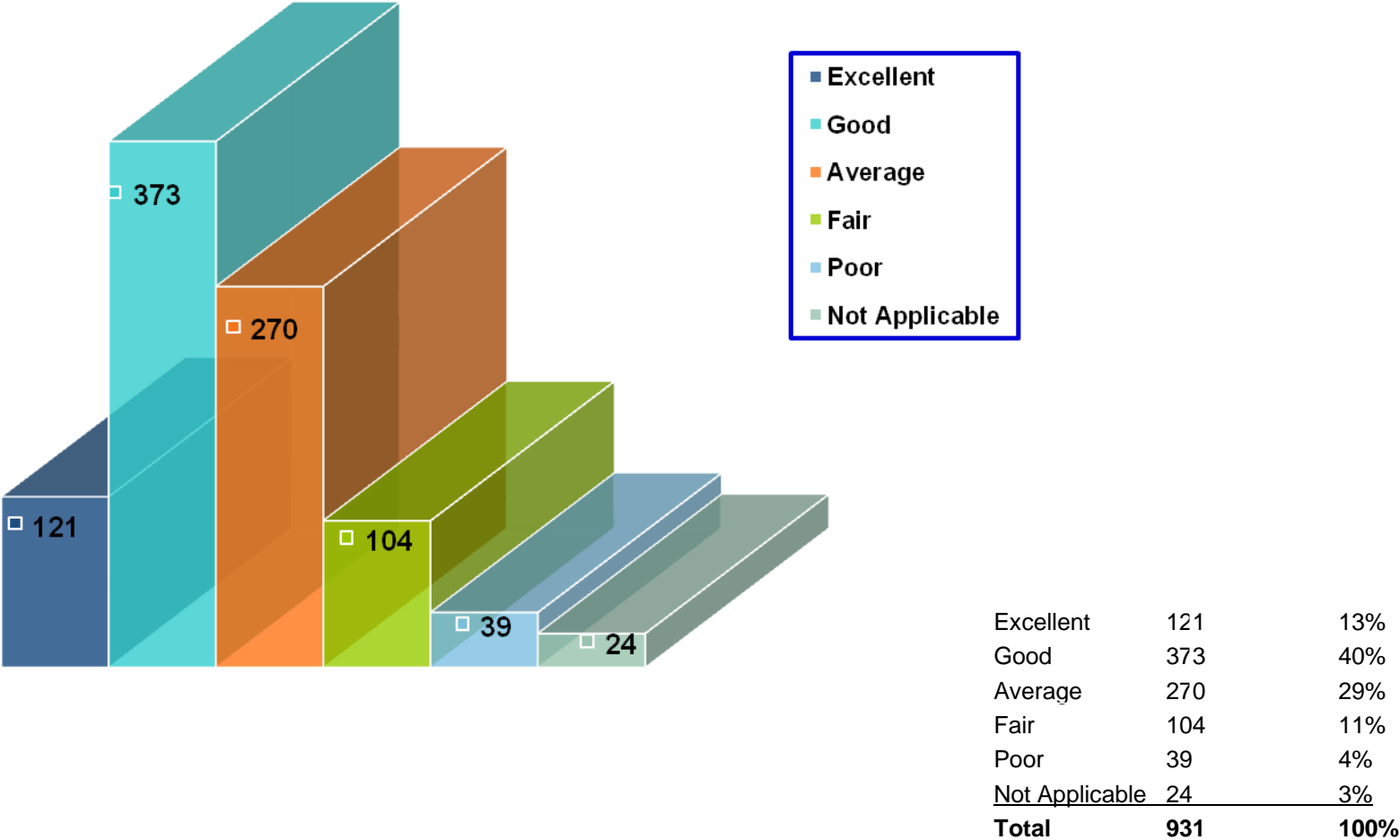
|                        |            |             |
|------------------------|------------|-------------|
| Increase More than 10% | 37         | 4%          |
| Increase 1-10%         | 103        | 11%         |
| Stay the same          | 441        | 47%         |
| Decrease 1-10%         | 120        | 13%         |
| Decrease More than 10% | 89         | 10%         |
| Do not know            | 141        | 15%         |
| <b>Total</b>           | <b>931</b> | <b>100%</b> |

# Is safety on a par with production in your organization?

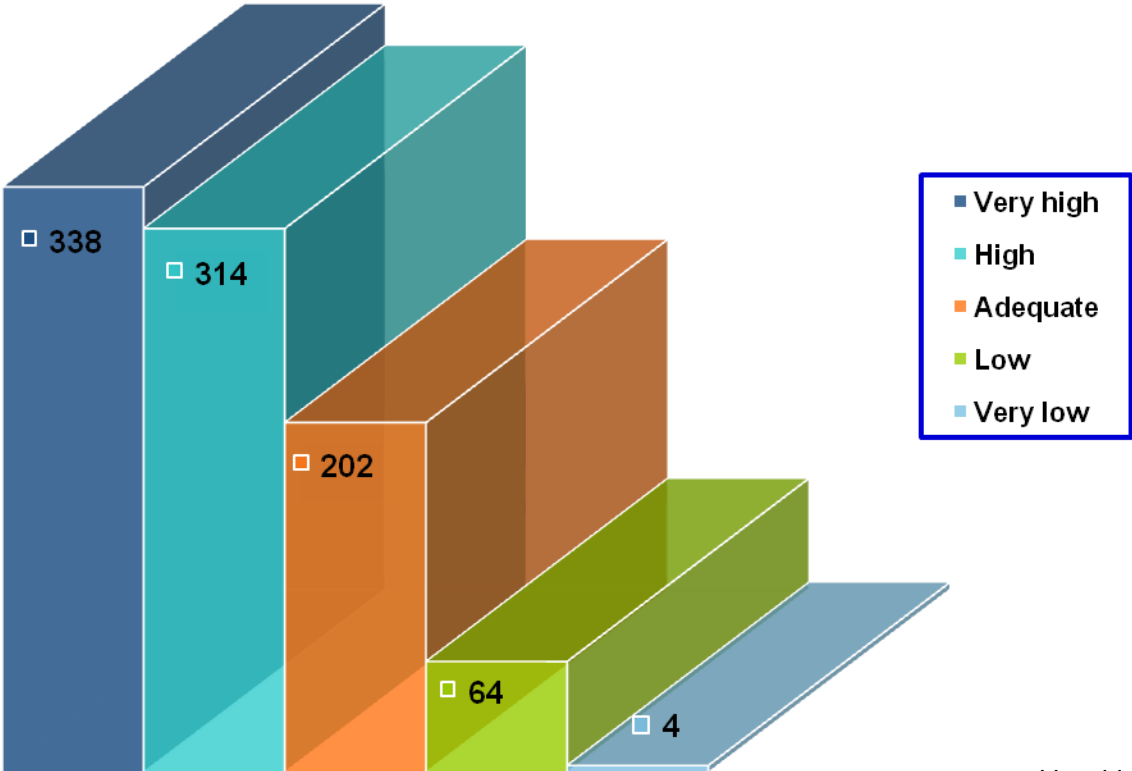


|                |            |             |
|----------------|------------|-------------|
| Yes            | 612        | 66%         |
| No             | 191        | 21%         |
| Not applicable | 122        | 13%         |
| <b>Total</b>   | <b>925</b> | <b>100%</b> |

# Overall, how would you rate first-line supervision's attention to safety and health in your organization?

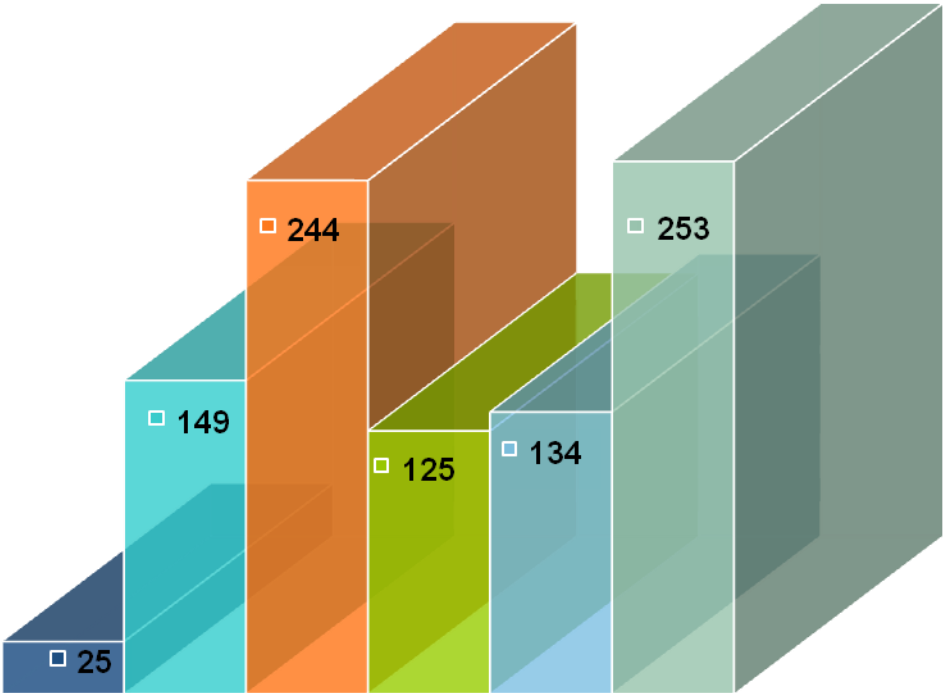


How would you rate the importance of employee safety and health in the everyday operations of your business? Rate from 1 (very high) to 5 (very low).



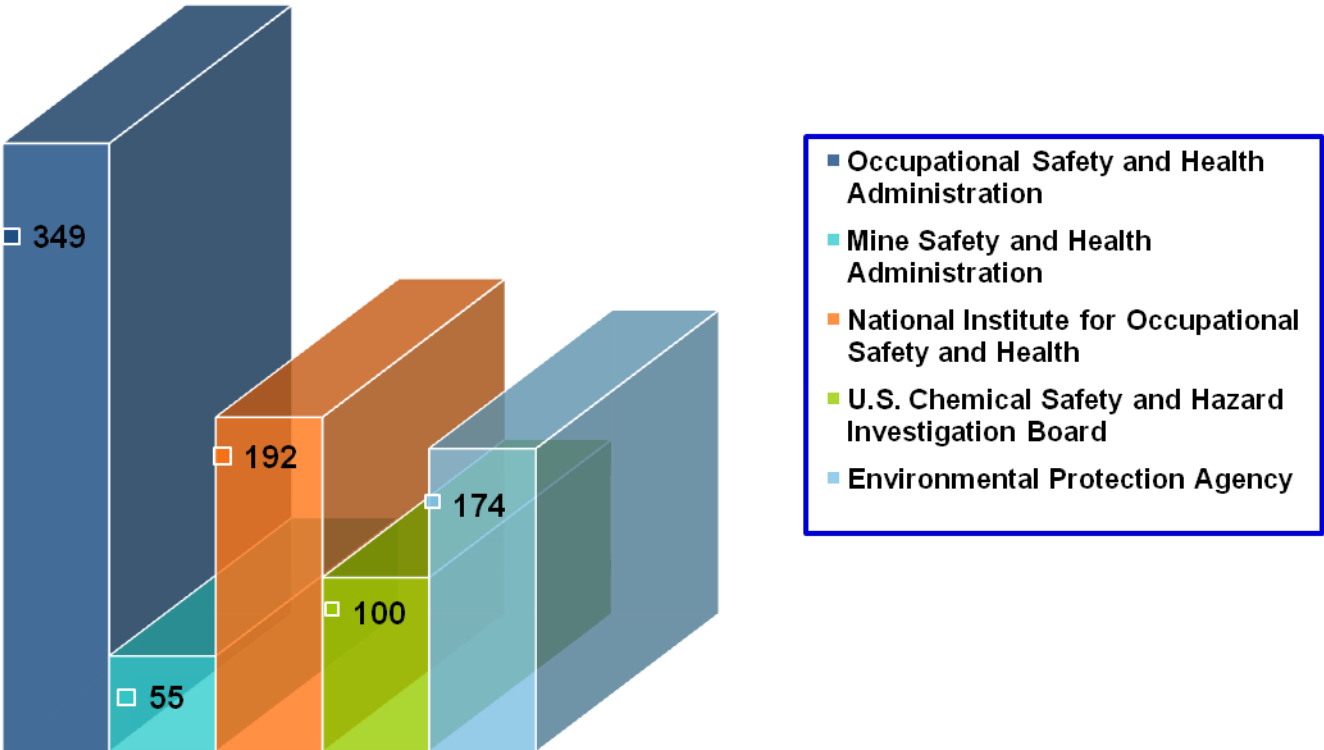
|              |            |             |
|--------------|------------|-------------|
| Very high    | 338        | 37%         |
| High         | 314        | 34%         |
| Adequate     | 202        | 22%         |
| Low          | 64         | 7%          |
| Very low     | 4          | 0%          |
| <b>Total</b> | <b>922</b> | <b>100%</b> |

# How would you rate the performance so far of the Obama administration's approach to occupational safety and health?



|              |            |             |
|--------------|------------|-------------|
| Excellent    | 25         | 3%          |
| Good         | 149        | 16%         |
| Average      | 244        | 26%         |
| Fair         | 125        | 13%         |
| Poor         | 134        | 14%         |
| Do not know  | 253        | 27%         |
| <b>Total</b> | <b>930</b> | <b>100%</b> |

# Which of the following occupational safety and health agencies do you consider the most effective in meeting its statutory responsibility?



|   |            |             |
|---|------------|-------------|
| Occupational Safety and Health Administration         | 349        | 40%         |
| Mine Safety and Health Administration                 | 55         | 6%          |
| National Institute for Occupational Safety and Health | 192        | 22%         |
| U.S. Chemical Safety and Hazard Investigation Board   | 100        | 11%         |
| Environmental Protection Agency                       | 174        | 20%         |
| <b>Total</b>  | <b>870</b> | <b>100%</b> |